



WE HAVE YOU COVERED IN EVERY DIRECTION

REX™ FORTIS is the only choice for demanding applications to protect from severe weather conditions and environments. Because of its one of a kind construction, **REX™ FORTIS** prevents the infiltration of air and water while still allowing for the escape of water vapor. But the most unique feature is the 360 degree drainage that no other wrap in the world can give. **REX™ FORTIS** can drain in EVERY direction, no matter the final wall cladding, wood, vinyl, metal, brick, stone, cement sidings, stucco or EFIS. The incorporation of ALTA 360° makes **REX™ FORTIS** a one of a kind all weather protection layer for any type of construction with the assurance of quality and lifelong service. **REX™ FORTIS** has you covered in every direction!

TEMPORARY ROOF PROTECTION
FLASHING & SEAM TAPES
HOUSEWRAP
SYNTHETIC ROOF UNDERLAYMENT



REX™ Fortis Low-P

	PRODUCT SPECIFICATION	TEST METHOD
Air Penetration Resistance	0.0013	ASTM E2178 (cfm/ft2@1.57 psf)
	> 2000	Gurley Hill (TAPPI-T460) (sec/100cm)
Water Vapor Transmission	105	ASTM E96 Method A (g/m2/24 hrs)
	15	(perms)
	72	ASTM E96 Method B (g/m2/24 hrs)
Water Penetration Resistance	10.4	(perms)
	> 300	AATCC 127 (cm)
Basis Weight	2.2	TAPPI T-410 (oz/sq yd)
Thickness	8	ASTM D3776 (mils)
Breaking Strength	30	ASTM D882 (lb/in) MD
	30	ASTM D882 (lb/in) CD
Dry Tensile	45	ASTM D5034 (lb/in) MD
	45	ASTM D5034 (lb/in) CD
Tear Resistance (Trapezoid)	13.5	ASTM D1117 (lbs) MD
	12.5	ASTM D1117 (lbs) CD
Drainage Efficiency	> 95%	ASTM E2273
	> 95%	ICC-ES AC 235 Section 4.5
Surface Burning Characteristics	5 Class A	ASTM E84 Flame Spread Index
	45 Class A	Smoke Develop Index
Ultra Violet Light Exposure	180 days	

Roll Size (Rolls per Pallet)	
36"x100'	50 Rolls
36"x150'	45 Rolls
54"x100'	100 Rolls
54"x150'	90 Rolls
9'x100'	50 Rolls
9'x150'	45 Rolls
9'x195'	40 Rolls
10'x100'	50 Rolls
10'x150'	45 Rolls
10'x195'	40 Rolls



CODE CHANGES
International Code Council
ICC ESR-4132

AlphaProTech Engineered Products, Inc.
301 South Blanchard St.
Valdosta, GA 31601
866-312-1837

Manufacturing & Distribution Facilities
Valdosta, Georgia
Nogales, Arizona
Salt Lake City, Utah





WE HAVE YOU COVERED IN EVERY DIRECTION

REX™ FORTIS is the only choice for demanding applications to protect from severe weather conditions and environments. Because of its one of a kind construction, **REX™ FORTIS** prevents the infiltration of air and water while still allowing for the escape of water vapor. But the most unique feature is the 360 degree drainage that no other wrap in the world can give. **REX™ FORTIS** can drain in EVERY direction, no matter the final wall cladding, wood, vinyl, metal, brick, stone, cement sidings, stucco or EFIS. The incorporation of ALTA 360° makes **REX™ FORTIS** a one of a kind all weather protection layer for any type of construction with the assurance of quality and lifelong service. **REX™ FORTIS** has you covered in every direction!

SYNTHETIC ROOF UNDERLAYMENT
 HOUSEWRAP
 FLASHING & SEAM TAPES
 TEMPORARY ROOF PROTECTION



REX™ Fortis High-P

	PRODUCT SPECIFICATION	TEST METHOD
Air Penetration Resistance	0.00082	ASTM E2178 (cfm/ft2@1.57 psf)
	> 2500	Gurley Hill (TAPPI-T460) (sec/100cm)
Water Vapor Transmission	385	ASTM E96 Method A (g/m2/24 hrs)
	55	(perms)
	465	ASTM E96 Method B (g/m2/24 hrs)
Water Penetration Resistance	67	(perms)
	> 300	AATCC 127 (cm)
Basis Weight	2.2	TAPPI T-410 (oz/sq yd)
Thickness	8	ASTM D3776 (mils)
Breaking Strength	30	ASTM D882 (lb/in) MD
	30	ASTM D882 (lb/in) CD
Dry Tensile	45	ASTM D5034 (lb/in) MD
	45	ASTM D5034 (lb/in) CD
Tear Resistance (Trapezoid)	13.5	ASTM D1117 (lbs) MD
	12.5	ASTM D1117 (lbs) CD
Drainage Efficiency	> 95%	ASTM E2273
	> 95%	ICC-ES AC 235 Section 4.5
Surface Burning Characteristics	5 Class A	ASTM E84 Flame Spread Index
	45 Class A	Smoke Develop Index
Ultra Violet Light Exposure	180 days	

Roll Size (Rolls per Pallet)	
36"x100'	50 Rolls
36"x150'	45 Rolls
54"x100'	100 Rolls
54"x150'	90 Rolls
9'x100'	50 Rolls
9'x150'	45 Rolls
9'x195'	40 Rolls
10'x100'	50 Rolls
10'x150'	45 Rolls
10'x195'	40 Rolls



CODE CHANGES
 International Code Council
 ICC ESR-4132

AlphaProTech Engineered Products, Inc.
 301 South Blanchard St.
 Valdosta, GA 31601
 866-312-1837

Manufacturing & Distribution Facilities
 Valdosta, Georgia
 Nogales, Arizona
 Salt Lake City, Utah



TEMPORARY ROOF PROTECTION

FLASHING & SEAM TAPES

HOUSEWRAP

SYNTHETIC ROOF UNDERLAYMENT

WE HAVE YOU COVERED IN EVERY DIRECTION

REX™ Fortis Commercial



REX™ FORTIS COMMERCIAL is the only choice for demanding applications to protect from severe weather conditions and environments in multi-family dwellings or commercial buildings that exceed 4 stories. Because of its one of a kind construction, **REX™ FORTIS COMMERCIAL** prevents the infiltration of air and water while still allowing for the escape of water vapor. But the most unique feature is the **360 degree** drainage that no other wrap in the world can give. **REX™ FORTIS COMMERCIAL** can drain in EVERY direction, and gives you the peace of mind to aid in controlling energy cost of the structure. The incorporation of ALTA 360° makes **REX™ FORTIS COMMERCIAL** a one of a kind all weather protection layer for commercial construction with the assurance of quality and lifelong service. **REX™ FORTIS COMMERCIAL** has you covered in every direction!



REX™ Fortis Commercial

	PRODUCT SPECIFICATION	TEST METHOD
Air Penetration Resistance	0.0008	ASTM E2178 (cfm/ft2@1.57 psf)
	> 1800	Gurley Hill (TAPPI-T460) (sec/100cm)
	Type 1	ASTM E1677
Water Vapor Transmission	245	ASTM E96 Method A (g/m2/24 hrs)
	35	(perms)
	435	ASTM E96 Method B (g/m2/24 hrs)
Water Penetration Resistance	62.6	(perms)
	> 300	AATCC 127 (cm)
Basis Weight	2.3	TAPPI T-410 (oz/sq yd)
Thickness	8	ASTM D3776 (mils)
Breaking Strength	30	ASTM D882 (lb/in) MD
	30	ASTM D882 (lb/in) CD
Dry Tensile	45	ASTM D5034 (lb/in) MD
	45	ASTM D5034 (lb/in) CD
Tear Resistance (Trapezoid)	13.5	ASTM D1117 (lbs) MD
	12.5	ASTM D1117 (lbs) CD
Drainage Efficiency	> 95%	ASTM E2273
	> 95%	ICC-ES AC 235 Section 4.5
Surface Burning Characteristics	15 Class A	ASTM E84 Flame Spread Index
	45 Class A	Smoke Develop Index
Ultra Violet Light Exposure	180 days	

Roll Size (Rolls per Pallet)	
36"x100'	50 Rolls
36"x150'	45 Rolls
54"x100'	100 Rolls
54"x150'	90 Rolls
9'x100'	50 Rolls
9'x150'	45 Rolls
9'x195'	40 Rolls
10'x100'	50 Rolls
10'x150'	45 Rolls
10'x195'	40 Rolls



CODE CHANGES
International Code Council
ICC ESR-4132

AlphaProTech Engineered Products, Inc.
301 South Blanchard St.
Valdosta, GA 31601
866-312-1837

Manufacturing & Distribution Facilities
Valdosta, Georgia
Nogales, Arizona
Salt Lake City, Utah





WE HAVE YOU COVERED

SYNTHETIC ROOF UNDERLAYMENT

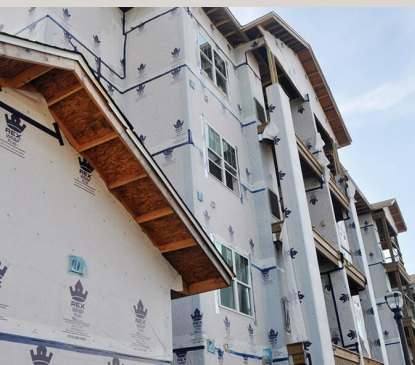
HOUSEWRAP

FLASHING & SEAM TAPES

TEMPORARY ROOF PROTECTION

REX Wrap Plus® is manufactured from a polypropylene woven fabric with a polypropylene coating that contains UV inhibitors.

- Provides protection from water infiltration but breathes allowing water vapor to escape through micro perforations offering protection to the interior wall cavity
- Custom printing for as little as one pallet
- UV resistant and can be left exposed for up to 6 months
- Tear resistant reduces jobsite waste and blow-offs
- Meets and exceeds all current building codes for water resistive barrier as well as air barrier



REX Wrap Plus®

	PRODUCT SPECIFICATIONS	TEST METHOD
Composition	Woven Polypropylene	
Weight Per Roll	14.4 lbs./ MSF	
Thickness	6.5 mils.	
Tensile Strength	MD	60 ASTM D-828
	CD	44
Tear Strength	MD	34 ASTM D-4533
	CD	30
Water Resistance	Pass	ASTM D-779
MVTR/Perms	9 Perms	ASTM E-96
Fire Rating	Class A	ASTM E-84

ROLL SIZE (ROLLS PER PALLET)	
9 ft. x 100 ft. (50)	54 in. x 100 ft. (100)
9 ft. x 150 ft. (45)	54 in. x 150 ft. (90)
9 ft. x 195 ft. (40)	54 in. x 195 ft. (80)
10 ft. x 100 ft. (50)	36 in. x 100 ft. (150)
10 ft. x 150 ft. (45)	36 in. x 150 ft. (135)
10 ft. x 195 ft. (40)	



WE HAVE YOU COVERED

SYNTHETIC ROOF UNDERLAYMENT

HOUSEWRAP

FLASHING & SEAM TAPES

TEMPORARY ROOF PROTECTION

REX Wrap® is manufactured from a polypropylene woven fabric with a polypropylene coating that contains UV inhibitors.

- Provides protection from water infiltration but breathes allowing water vapor to escape
- Light weight and somewhat translucent to allow for easy installation
- UV resistant and can be left exposed for up to 6 months
- Tear resistant reduces jobsite waste and blow-offs
- Meets and exceeds all current building codes for water resistive barrier as well as air barrier



REX Wrap®

	PRODUCT SPECIFICATIONS	TEST METHOD
Composition	Woven Polypropylene	
Weight Per Roll	13.1 lbs./ MSF	
Thickness	5.5 mils.	
Tensile Strength	MD 79	ASTM D-5034
	CD 51	
Tear Strength	MD 47.1	ASTM D-4533
	CD 18.7	
Water Resistance	Pass	ASTM D-779
MVTR/Perms	9 Perms	ASTM E-96
Fire Rating	Class A	ASTM E-84

ROLL SIZE (ROLLS PER PALLET)	
9 ft. x 100 ft. (50)	54 in. x 100 ft. (100)
9 ft. x 150 ft. (45)	54 in. x 150 ft. (90)
9 ft. x 195 ft. (40)	54 in. x 195 ft. (80)
10 ft. x 100 ft. (50)	36 in. x 100 ft. (150)
10 ft. x 150 ft. (45)	36 in. x 150 ft. (135)
10 ft. x 195 ft. (40)	